

**Phillips Park
2163 Dunmore Lane, NW
Washington DC 20007**

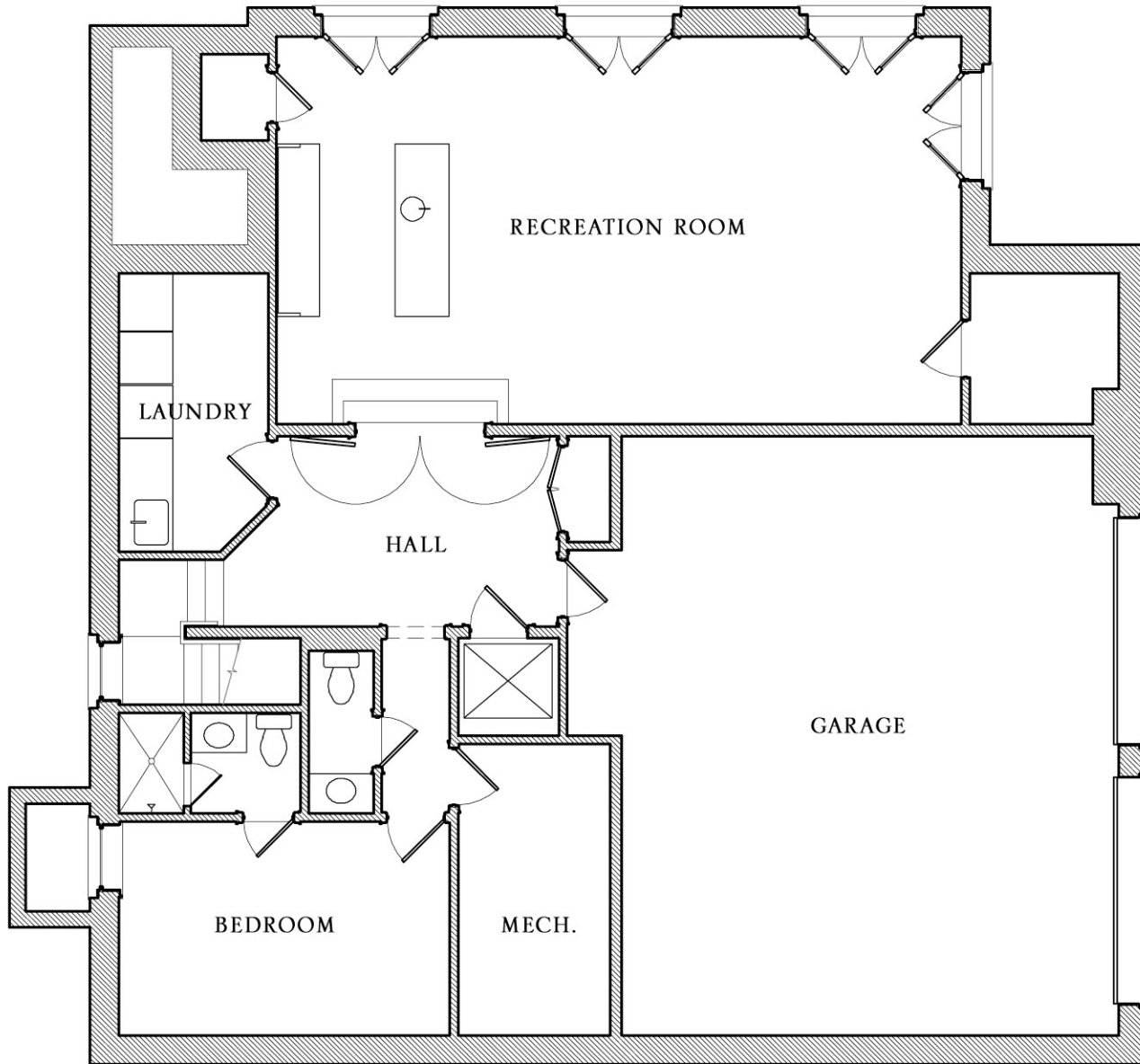
This Colonial Revival style home features a large open kitchen/family room overlooking beautiful parkland. Located off historic Foxhall Road in prestigious Phillips Park, it would be difficult to find a more desired location in Washington, D.C.

This home will be outfitted with elegant millwork and details using only the finest quality materials and finishes.

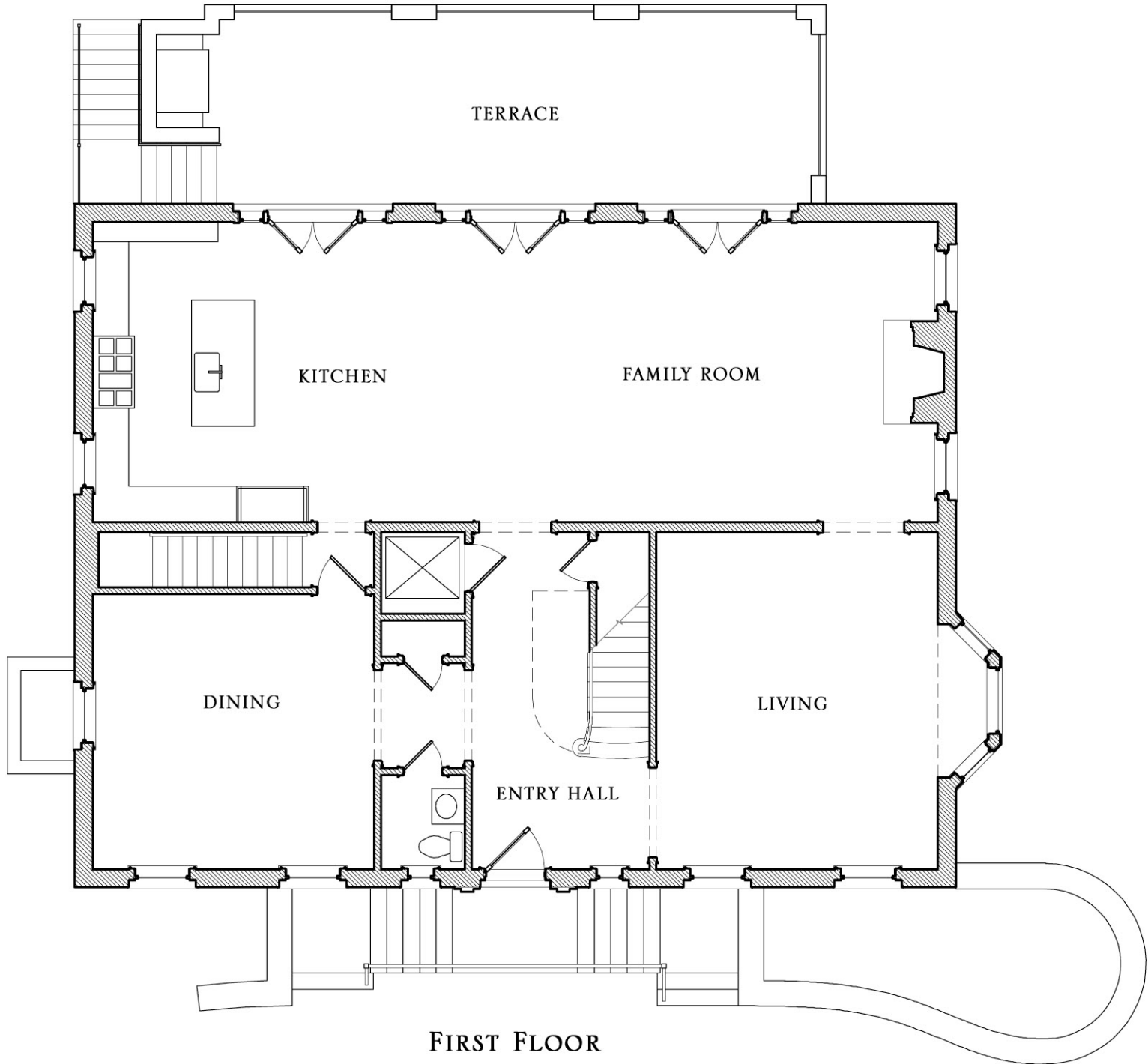
Highlights Include:

- Stone house, flagstone terrace with built-in gas grill
- Slate roof
- Copper gutters & downspouts
- Custom, cottage style, solid wood windows
- Traditionally designed, brass window sash locks & brass casement window stays & fasteners
- Western red cedar shutters with operable hand forged hardware
- Locally crafted, Sapele Mahogany exterior doors, 2 ¼" thick
- Rift white oak flooring
- Geothermal heating & cooling
- Plumbing package includes copper (Type L) water supply, cast iron waste, re-circulating water lines, & insulated piping for sound & energy preservation
- Foam insulation throughout entire house for top rated insulation & sound proofing
- Lutron Lighting Radio Ra2 Control System
- Elevator
- State-of-the-art data transmission structure will allow for multiple phones, data streams, satellite signals, antenna feeds, internet access, video cameras and more, to occur simultaneously, while being routed within a single comprehensive structured cable system. We will provide the necessary education of the latest trends and new technologies to make sure that all of your needs, both present and future, are accounted for.

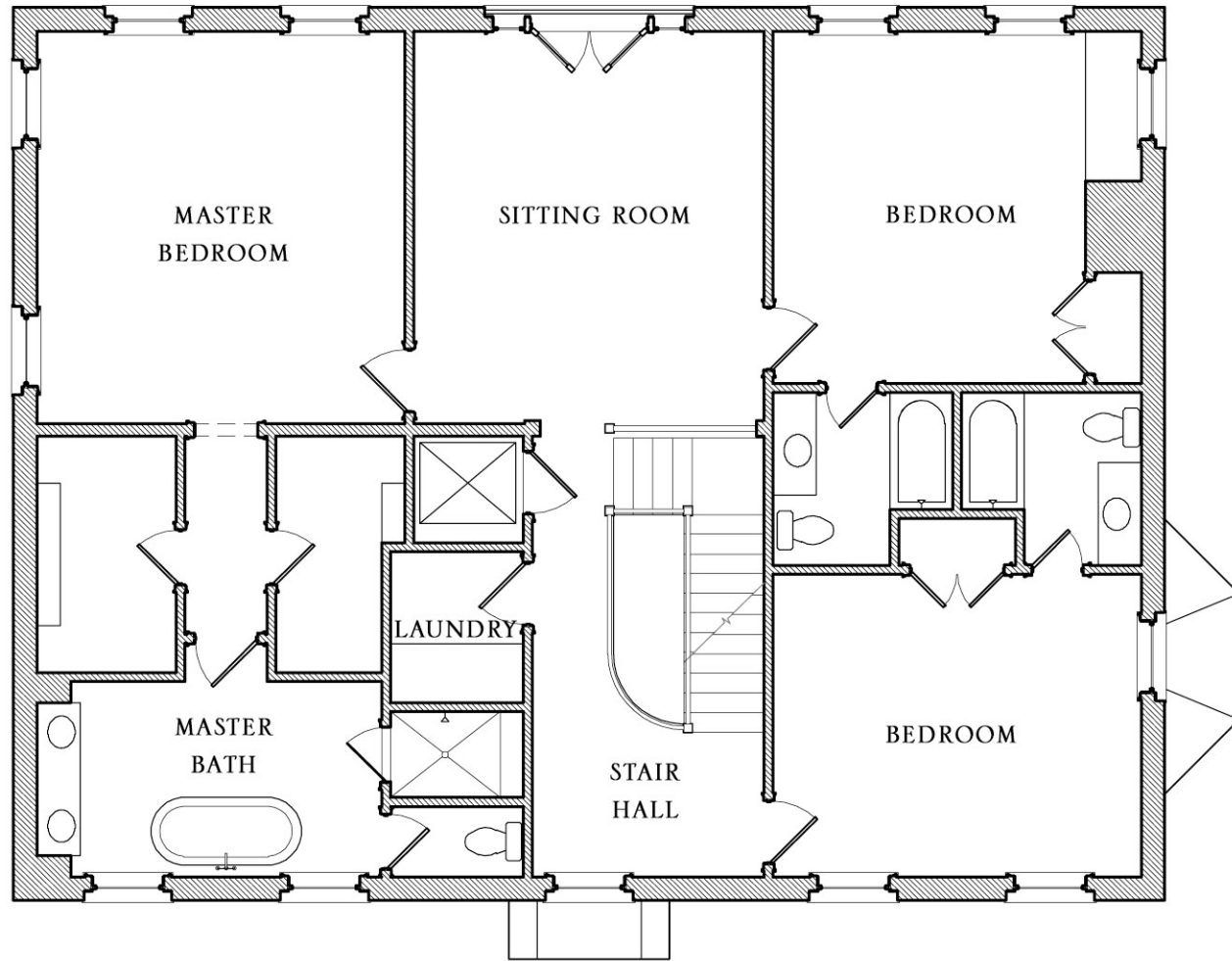
For more information about this home, please call or email: 301-652-4200/info@banksdevco.com



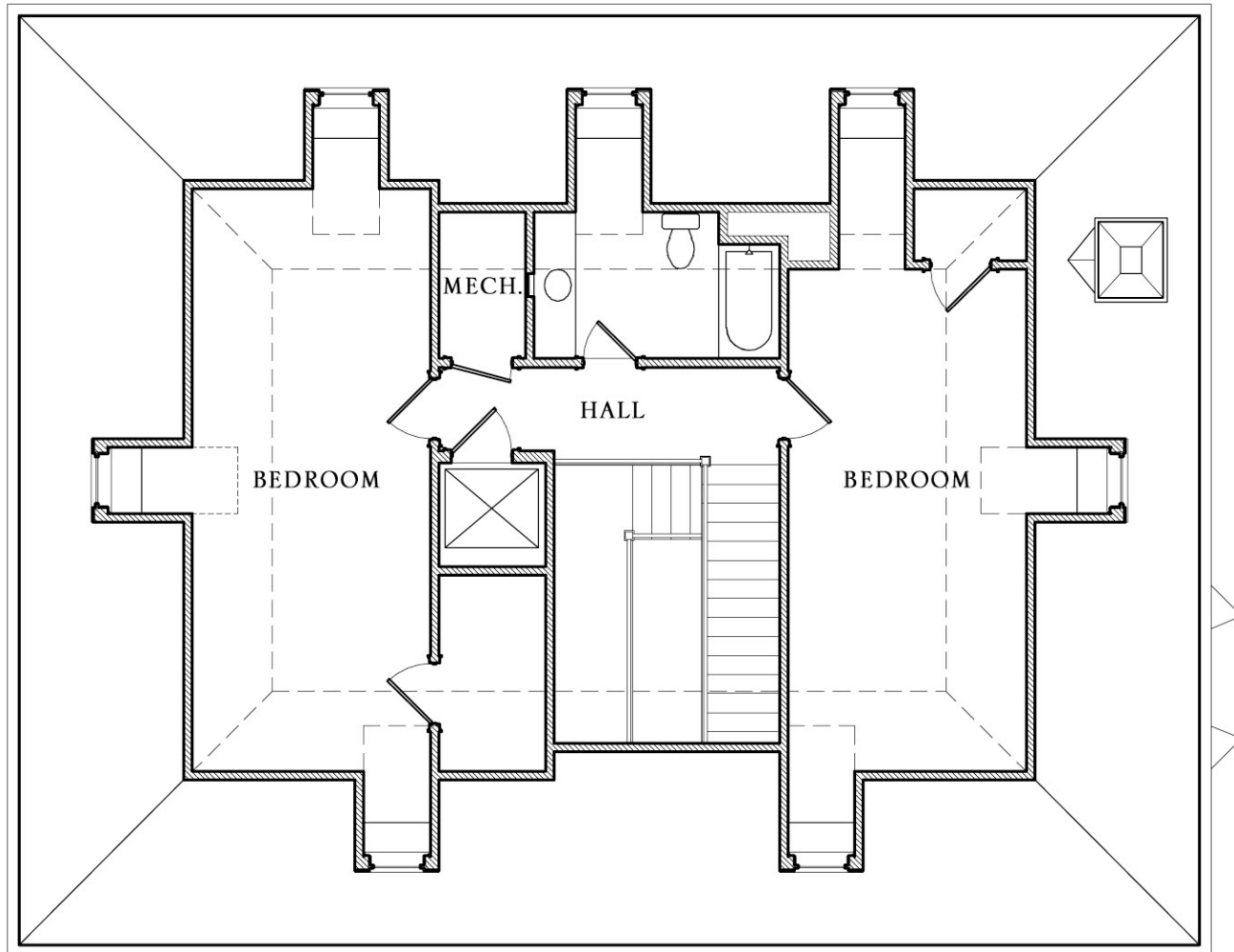
BASEMENT



FIRST FLOOR



SECOND FLOOR



THIRD FLOOR